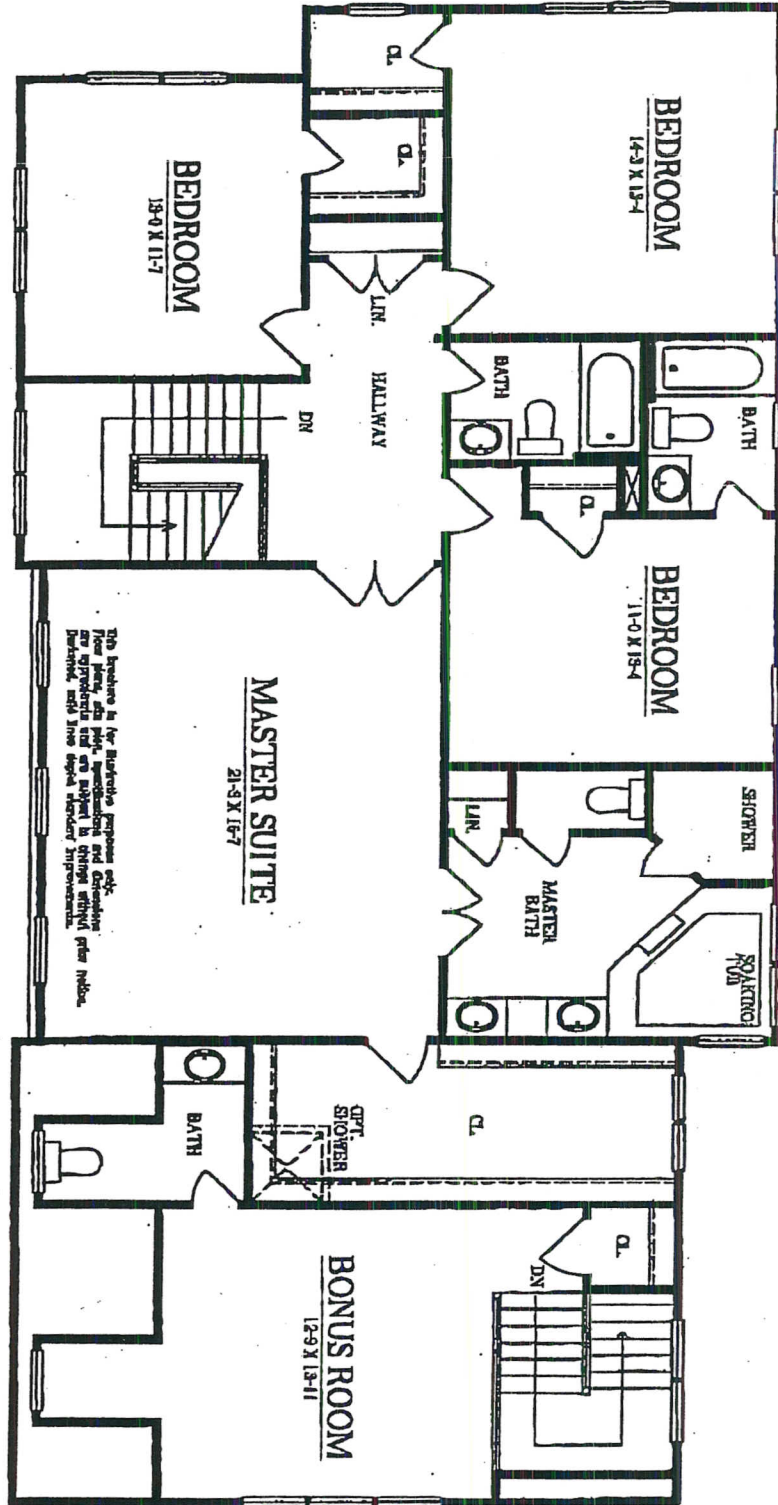


BASEMENT LEVEL PLAN



This blueprint is for illustrative purposes only. Floor plans, dimensions, specifications and descriptions are approximate and are subject to change without prior notice. Distances, such as those shown, are approximate.

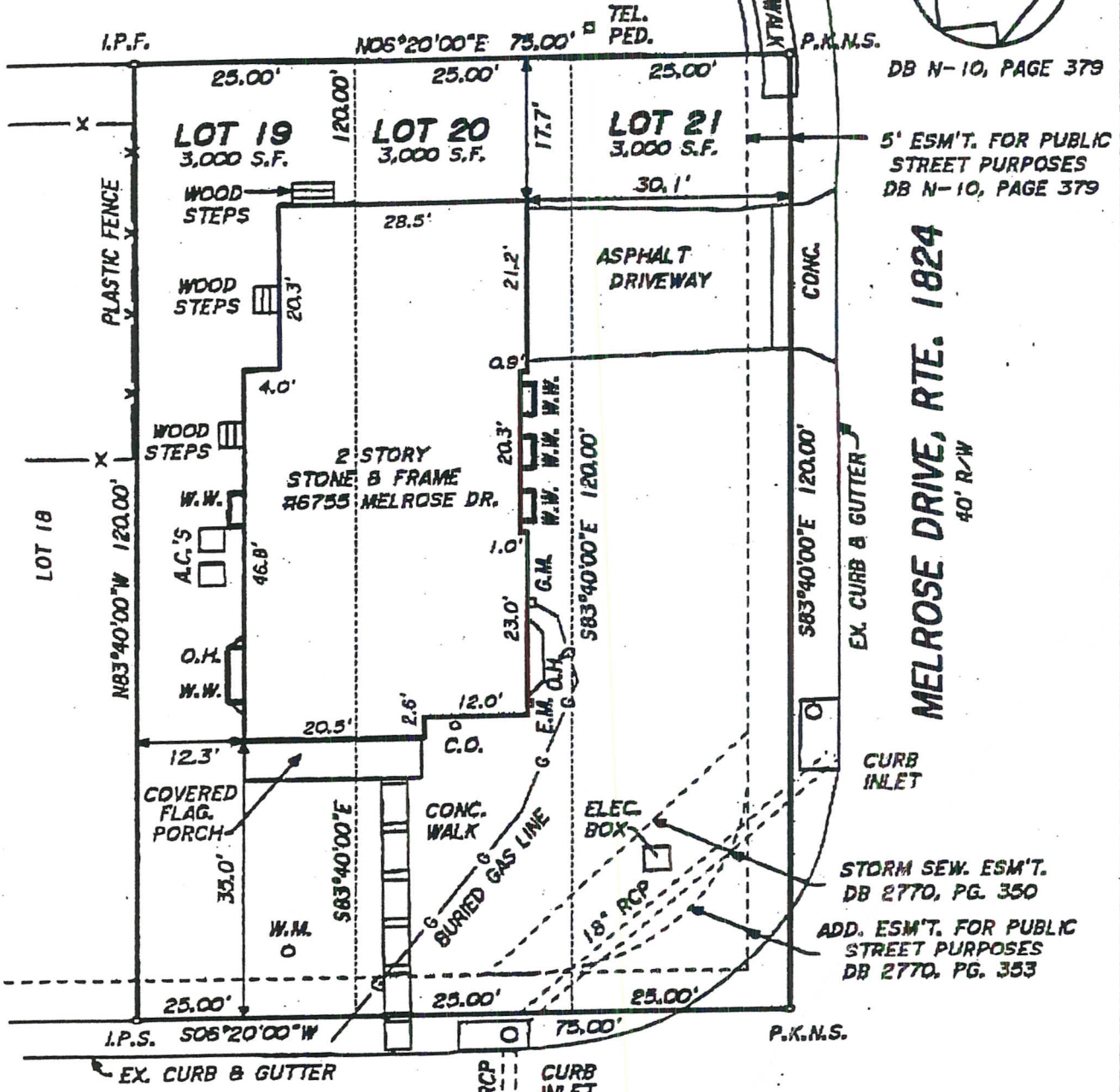
SECOND LEVEL FLOOR PLAN



FIRST LEVEL FLOOR PLAN

This building is for residential purposes only. Floor plans, site plans, specifications and dimensions are approximate and are subject to change without notice. Detailed work shall depict standard improvements.

PARCEL "E", SECTION 2
KINGS MANOR TOWNE HOMES



DB N-10, PAGE 379

5' ESM'T. FOR PUBLIC STREET PURPOSES
DB N-10, PAGE 379

MELROSE DRIVE, RTE. 1824
40' R/W

STORM SEW. ESM'T.
DB 2770, PG. 350

ADD. ESM'T. FOR PUBLIC STREET PURPOSES
DB 2770, PG. 353

COLONIAL ROAD, RTE. 5082
40' R/W

F.E.M.A./F.I.R.M. FLOOD DATA:
COMMUNITY NO: 515525
PANEL NO: 0100 D
FLOOD ZONE: X
EFFECTIVE DATE: 3-05-1990

FINAL APPROVAL

LEGEND:

- I.P.F. = IRON PIPE FOUND
- I.R.F. = IRON ROD FOUND
- I.P.S. = IRON PIPE SET
- P.K.N.S. = P.K. NAIL SET
- A.C. = AIR CONDITIONER
- C.O. = CLEAN OUT
- E.M. = ELECTRIC METER
- G.M. = GAS METER
- W.M. = WATER METER
- W.V. = WATER VALVE

- W.W. = WINDOW WELL
- C.L.F. = CHAIN LINK FENCE
- O.H. = OVERHANG

HOUSE LOCATION SURVEY
OTS 19-21, BLOCK E

N-10, PAGE 379
MANESVILLE DISTRICT
IRFAX COUNTY, VIRGINIA
TE: 5-21-2003 SCALE: 1" = 20'

ADMINISTRATION DIVISION
DEPARTMENT OF PLANNING AND ZONING